

M A T E R I C

COLLECTION



AGATHA	27
AMAZE	11
ARCHITECTURAL	40
BAMBUA	19
CAMOUFLAGE	14
CEMENT	43
COLETTE	21
COTONE	20
CRETE	46
DECOLLAGE	56
DECOLLAGE WALL	58
FLIGHT	64
FILETS	50
GEOMETRIC FRAME	32
GOLVEN	12
GRAFFITI	32
GRAN CANYON	12
GRUNGE	48
HEMP	22
LOVE	19
MALIKO	4
MANHATTAN	62
MARBLE	26
MATER	66
METAL SHEET	
MODULAR LAJUR	
MOSAIC	
MULTIMAT	
PAVONE	
PLASTER	
POPART	
QUEEN	
RICAMO	
RIFLESSI	
ROOFS	
SCACCO MATTO	
SENTIMENT	
SENSUAL	
SHADOW	
SIESTA	
SIGMA	
SK8	65
SOFT BOILED	49
SOMBRA	61
S.O.S.	54
SPIRAL	21
SQUARE MONO	29
STENCIL	15
SUMI	44
SUPERFICIE	36
TAIAO	5
TAPISSERIE	40
TEXTURE	60
TIFFANY	17
TILLAGA	42
TO GO UP	23
VISION	34
WINDMILL	30
WINGS	37
ZARA	



Taplab, con questo catalogo presenta una collezione di parati dedicati al materico, ovvero decorazioni di pareti che privilegiano la funzione espressiva della materia in quanto tale e concreta, fondandosi sull'evidenza e sulla consistenza della stessa. Terra, acqua, aria e fuoco, questi gli elementi fondamentali e costituenti di tutti i corpi terreni, determinandone una massa ed una estensione. Oggetti sensibili che occupano una estensione fatta di spessori e di tridimensionalità. Fonte di ispirazione in spazi abitativi minimali, l'ambiente materico che ci circonda ci coinvolge e ci emoziona, con cromie infinite che come d'incanto ricreano ambienti fantastici.

Taplab, with this catalogue, presents a wall-covering collection dedicated to the matter world; wall decorations that emphasise the expressive function of the substance as it is, based on its evidence and consistency. Earth, water, air and fire, these are the fundamental and constituent elements of all earthly bodies, determining their mass and extension. Sensitive objects that occupy a space made of three-dimensionality. The material environment, a source of inspiration in minimal living spaces, that surrounds and excites us, with infinite colours creating magically fantastic spaces.





MALIKO 464_005



SOMBRA 450_004



TAPISSERIE 484_001



TAPISSERIE 484_004





SIESTA 451_002



AMAZE 458_005



GOLVEN 349_004

GRAN CANYON 369_004



RIFLESSI 344_001



MATERIC

COLLECTION

TAPLAB



CAMOUFLAGE 038_001



LOVE 309_002



PLASTER 230_005



TILLAGA 211_001





COTONE 266_003



PAVONE 279_001



HEMP 235_001

COLETTE 260_001



VISION 258_001



MATERIC

COLLECTION

TAPLAB





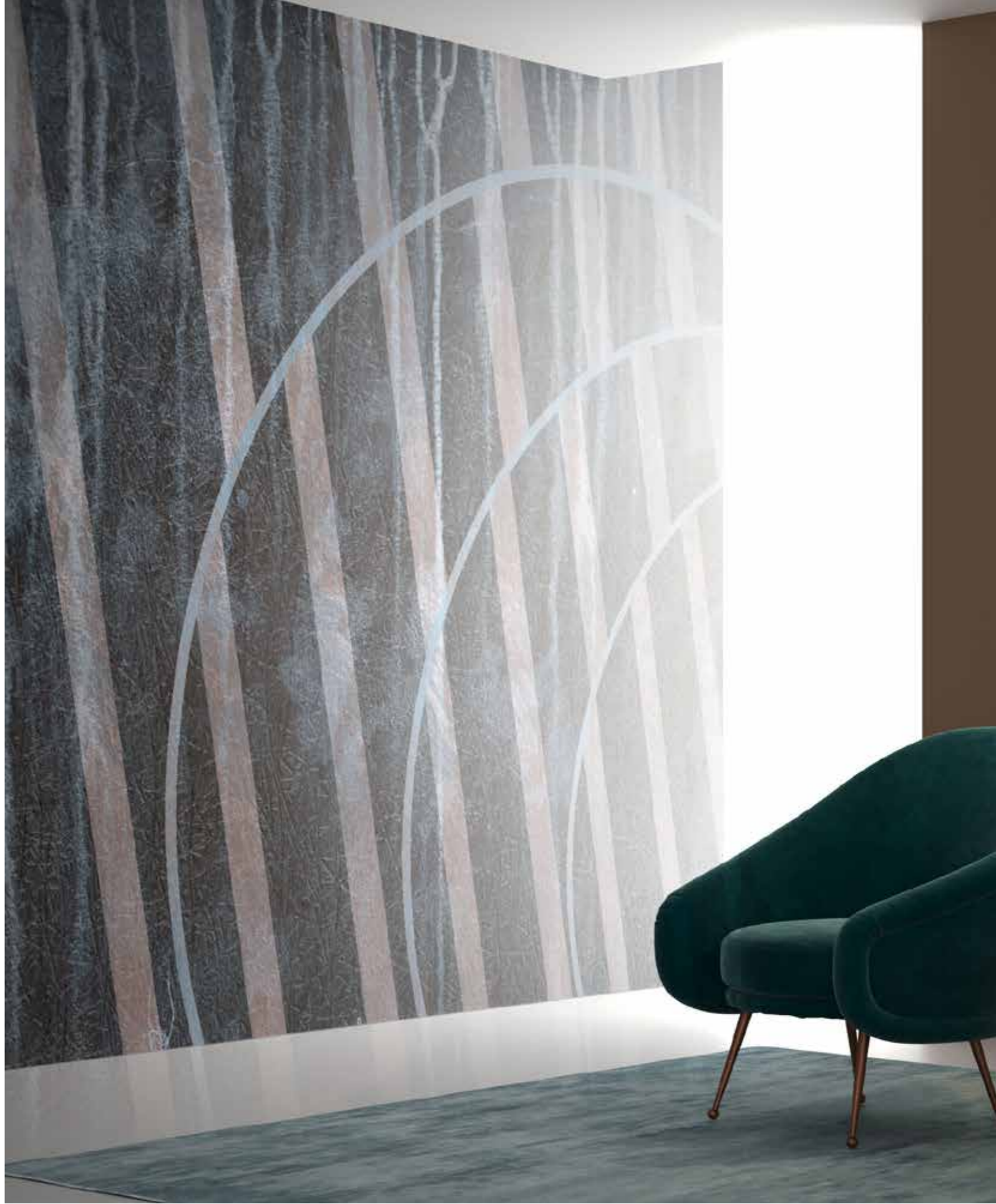
MARBLE 227_005



AGATHA 210_004



SQUARE MONO 079_005



SPIRAL 199_001



WINGS 096_005



ZARA 231_001



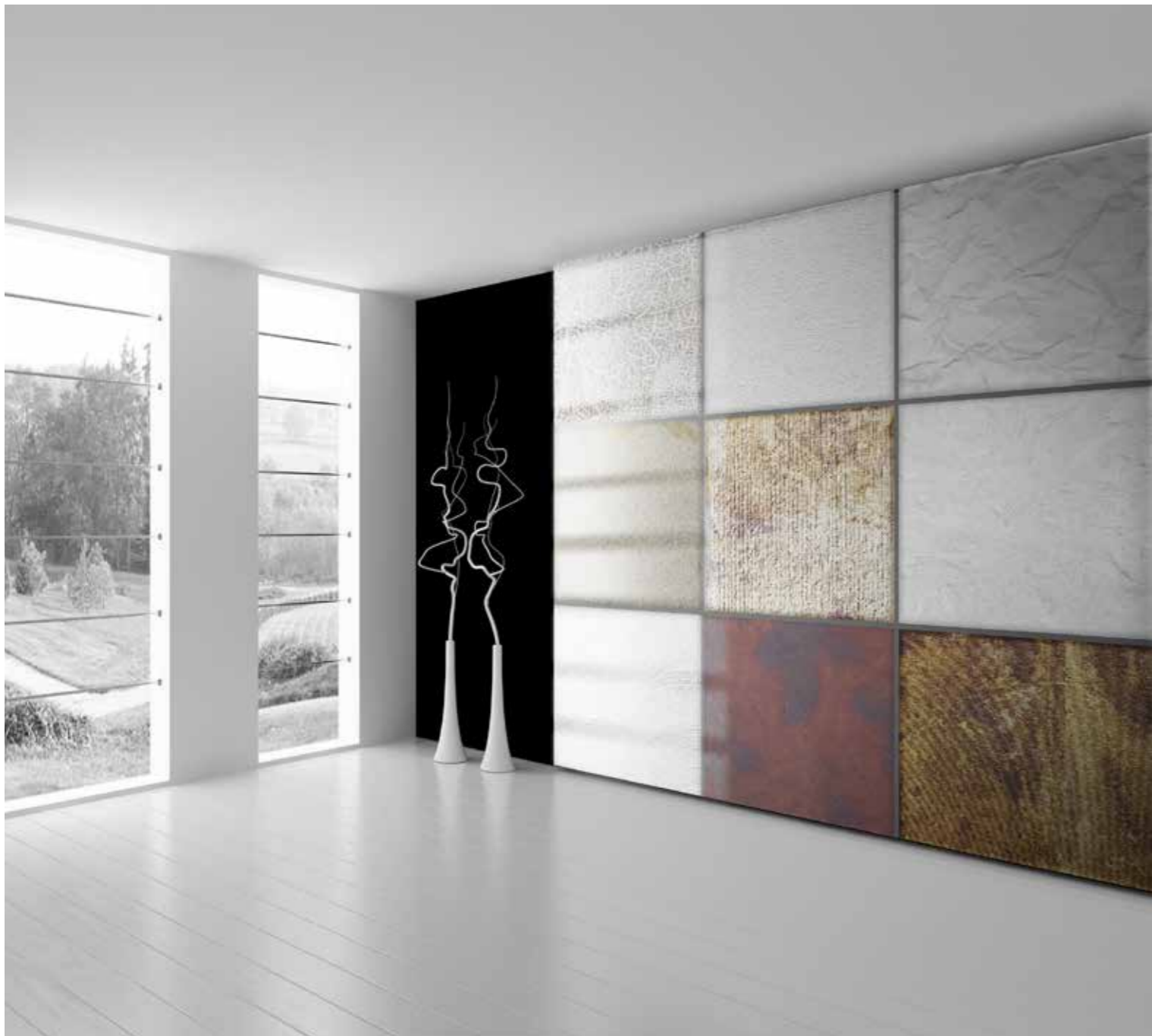


SHADOW 124_005



STENCIL 161_004





MULTIMAT 148_005



SCACCO MATTO 123_003



ARCHITECTURAL 125_005

TEXTURE 134_006



SIGMA 128_005



MATERIC

COLLECTION

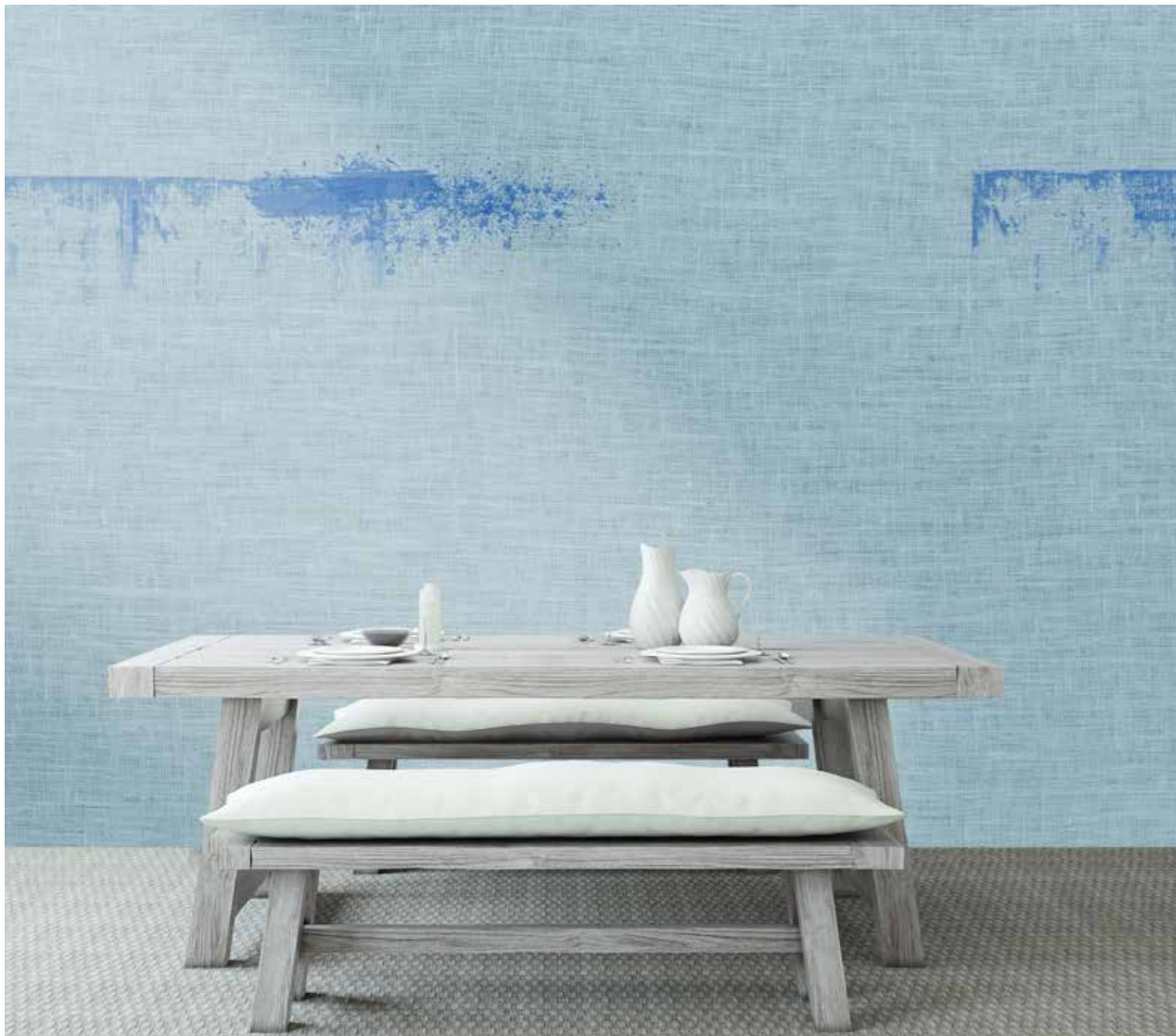
TAPLAB



TO GO UP 135_003



CEMENT 126_002



S.O.S. 136_001

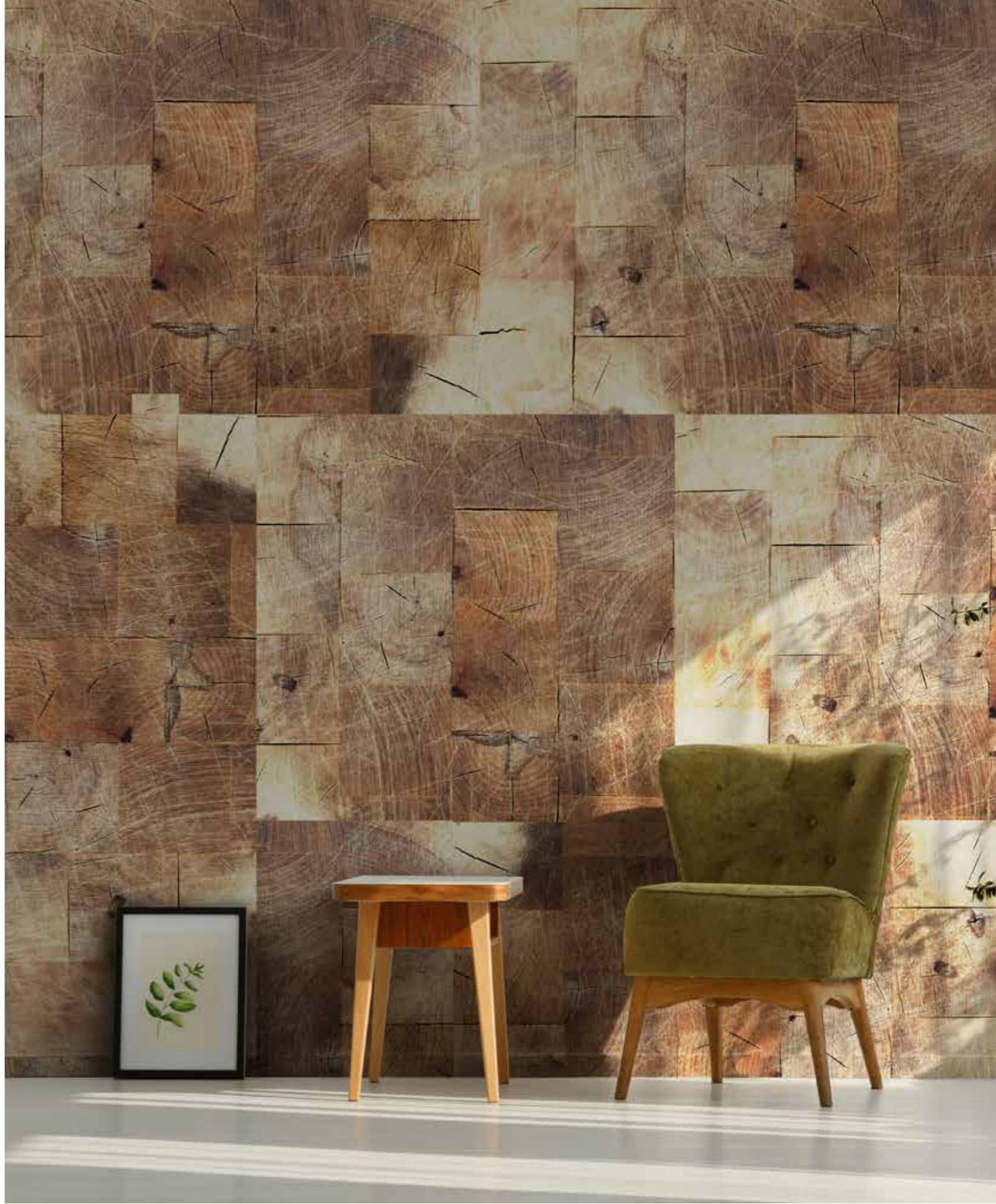


SUPERFICIE 138_005





GRUNGE 094_005



MOSAIC 092_003





RICAMO 247_001

SENTIMENT 280_001



GEOMETRIC FRAME 085_002



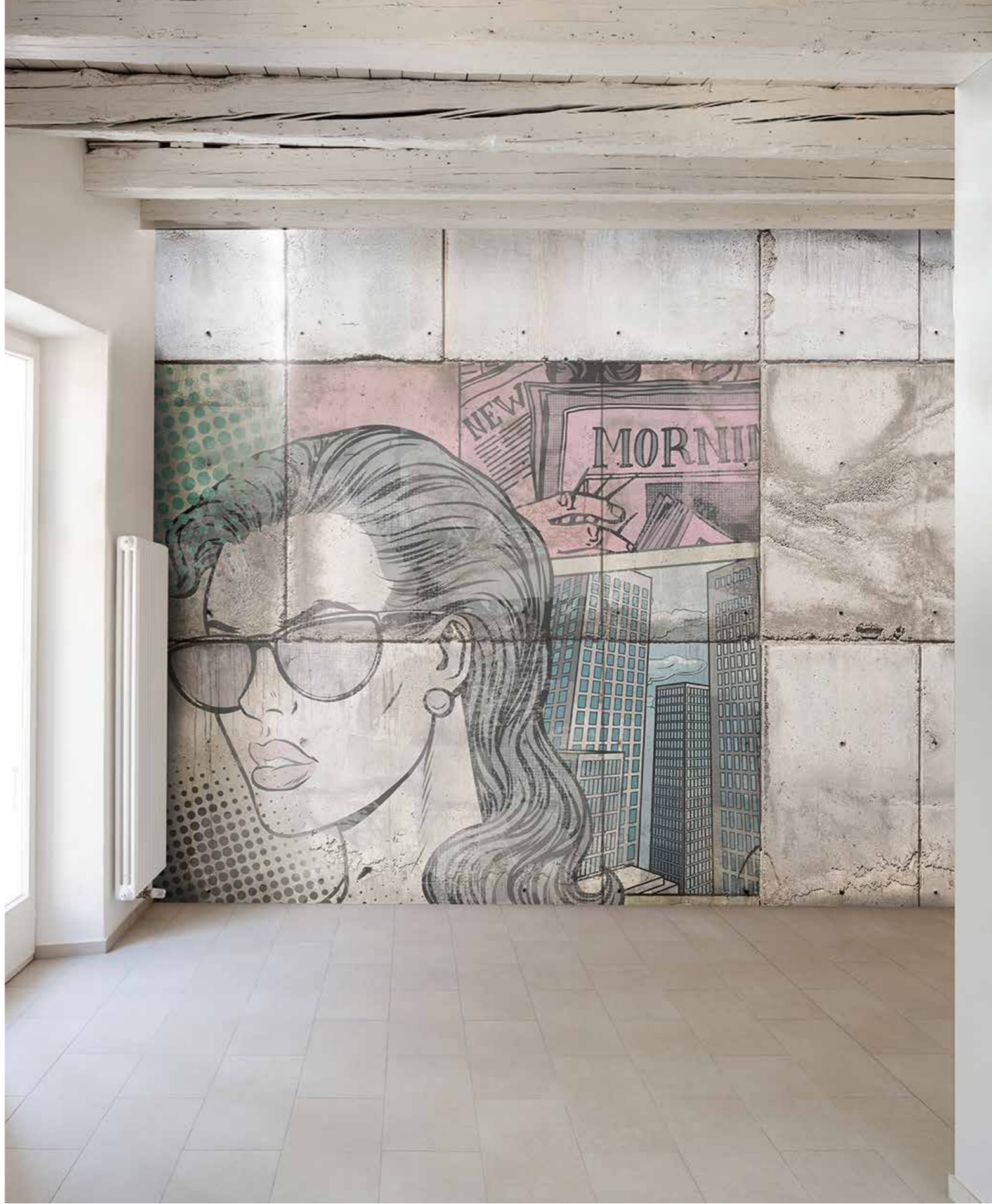
MATERIC

COLLECTION

TAPLAB



SENSUAL 259_001



POPART 149 005





DECOLLAGE WALL 121_004



SK8 097_002

MATERIC

COLLECTION

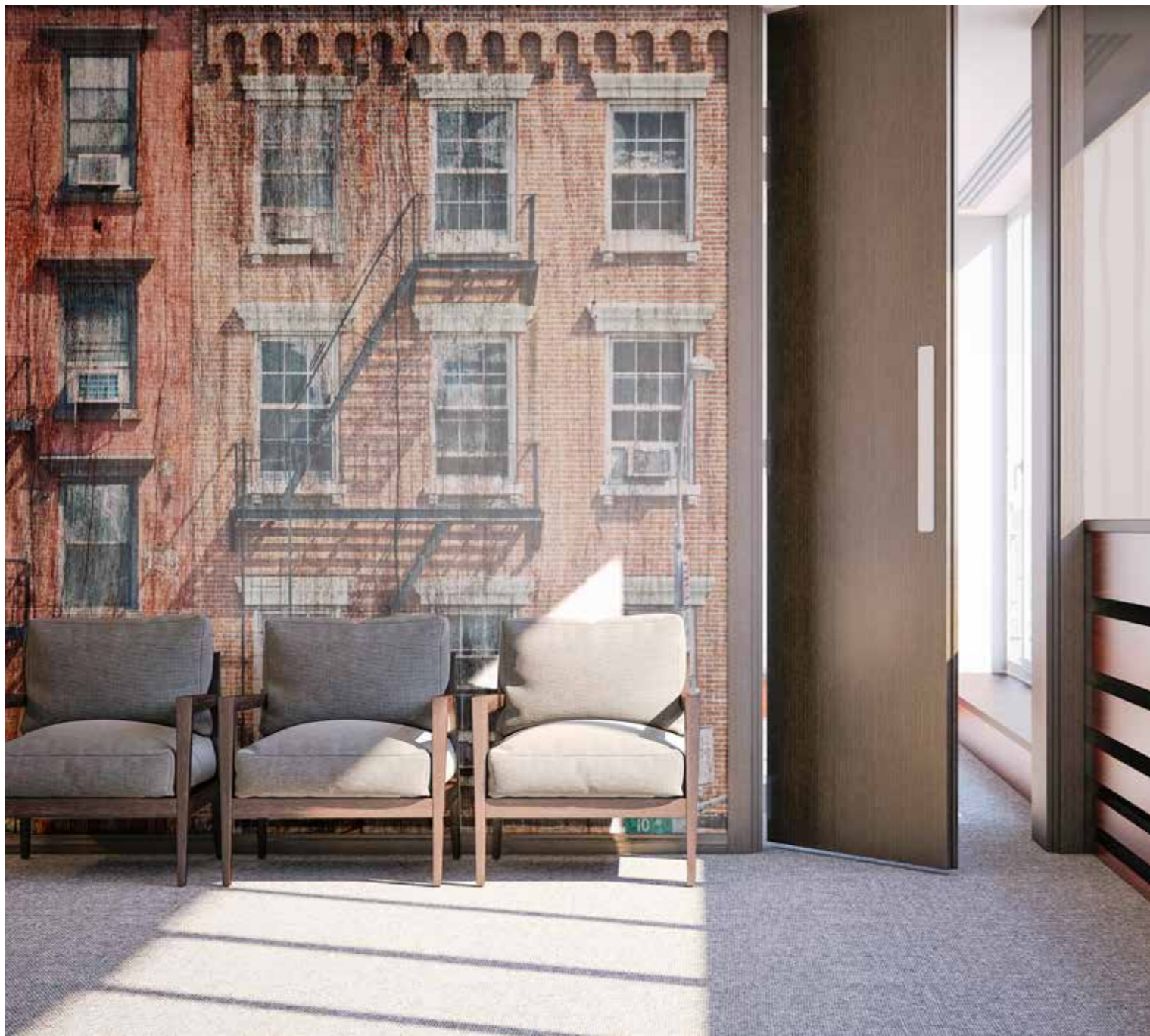
TAPLAB



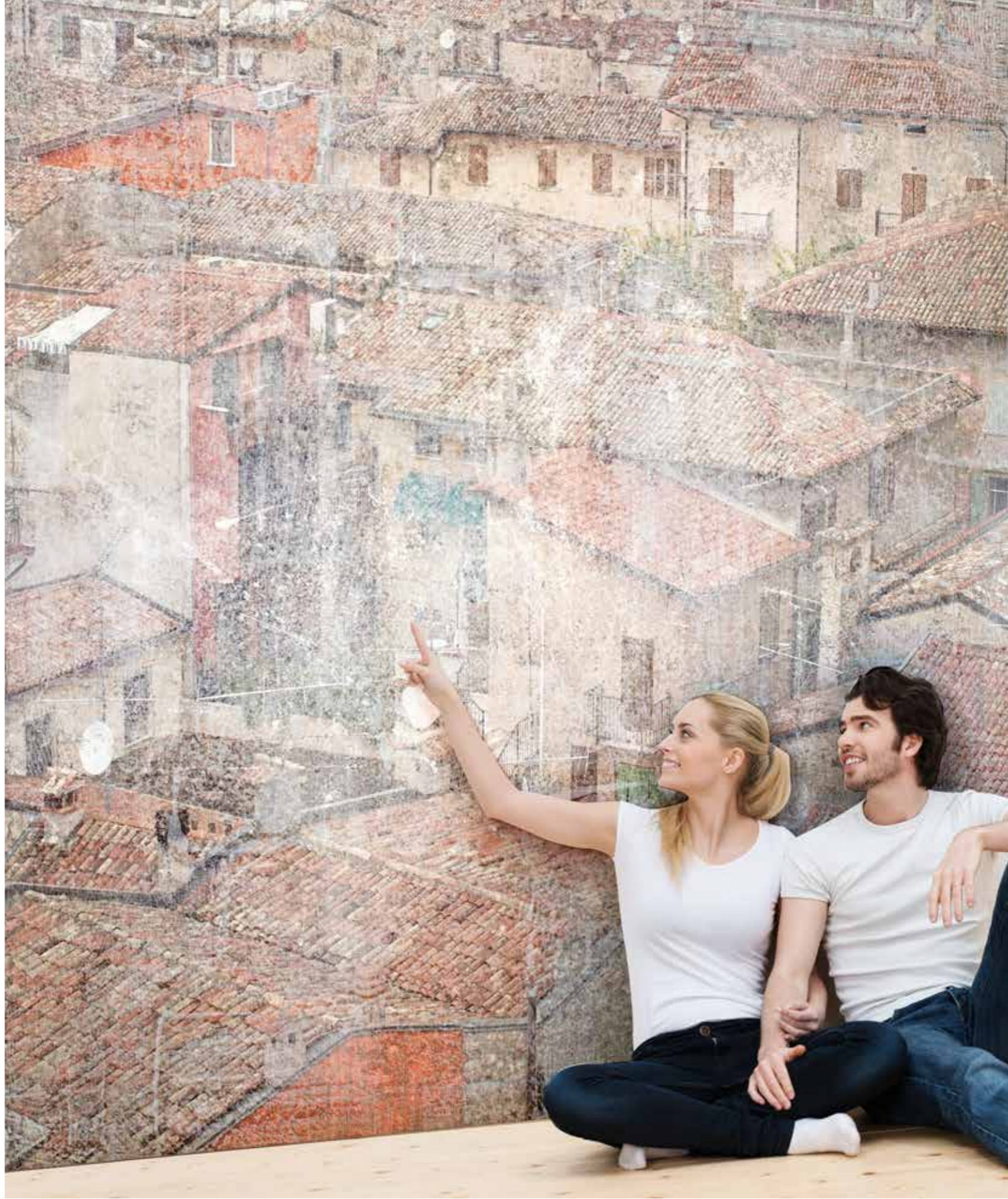
TIFFANY 133_005



SOFT BOILED 098_005



MANHATTAN 120_004



ROOFS 117_004



MODULAR LAJUR 052_001

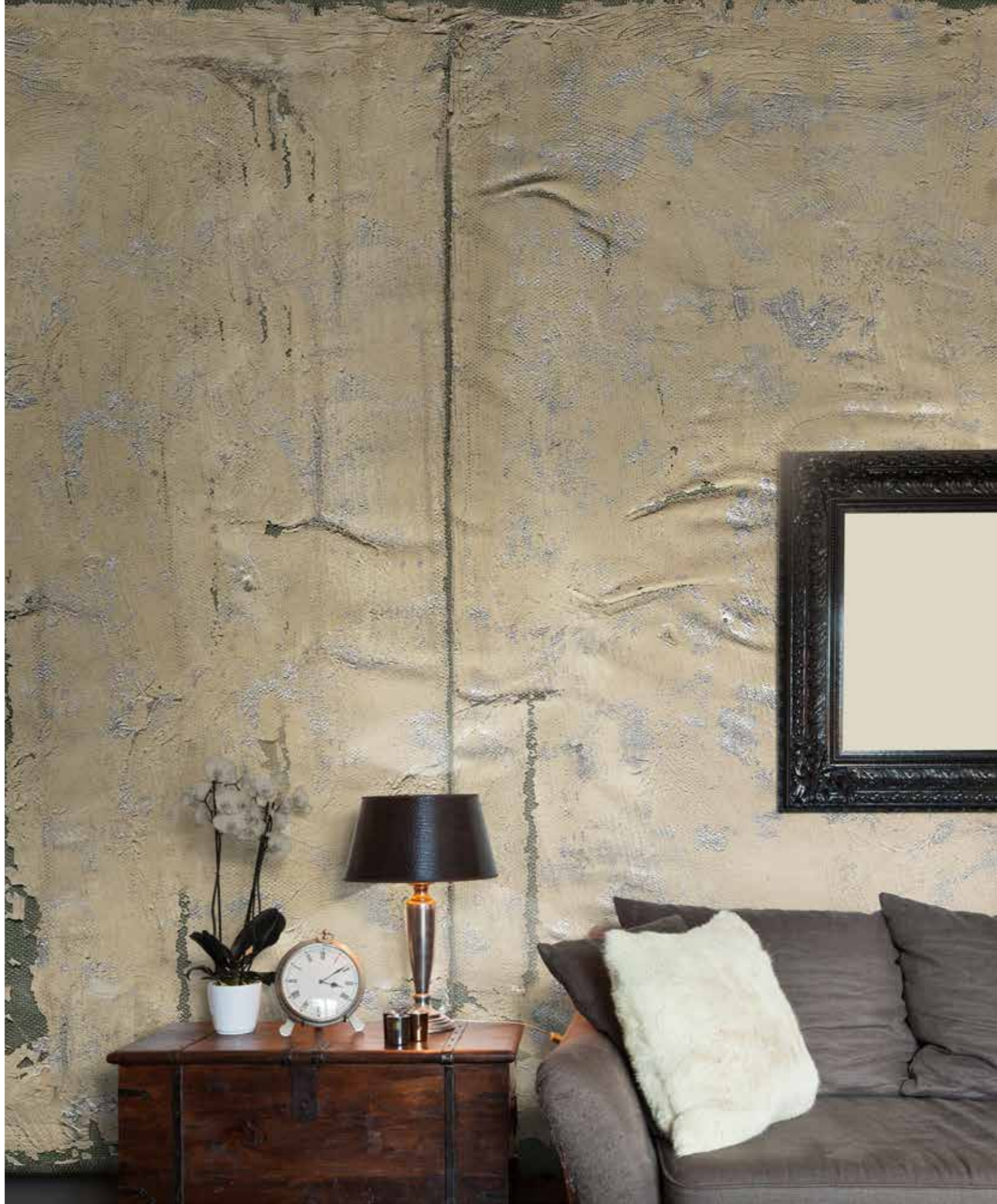


WINDMILL 118_003

FLIGHT 113_001



METAL SHEET 130_003



MATERIC

COLLECTION

TAPLAB



TapLab si riserva di aggiornare e modificare
in qualsiasi momento e senza preavviso
i dati e i materiali di questo catalogo.

Le tonalità dei decori riportati sul catalogo sono da ritenersi puramente indicative.

TapLab has the right to updated and change
the data and the materials contained in the catalogue
at any time and without notice.

The shades of the decorations on the catalog are to be regarded as purely indicative.



TAPLAB WALL COVERING
via san gimignano
53036 poggibonsi si italy
tel. +39 0577 985836
info@taplab.it taplab.it

Tutti i decori sono realizzabili su ogni tipo di tela
per utilizzo a parete, a pavimento o da esterno.
All patterns are suitable for all-purpose use,
such as wall, floor or outdoor covering.

Non è il cemento, non è il legno, non è la pietra, non è l'acciaio, non è il vetro l'elemento più resistente. Il materiale più resistente nell'edilizia è l'arte.

Reinforced concrete, wood, stone, steel, glass are not the most resistant materials. The most resistant building material is art.

(Giò Ponti)